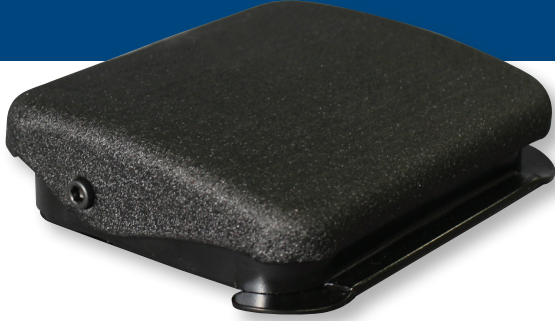


Series 600

Wide Target Designed with a wide stable platform for greater operator comfort and improved productivity.
10 AMP, 125/250 VAC



FEATURES

1. The 600 features a flexible strain relief option for up to 18/3 SVT cord for longer cable life.
2. High strength socket head hinge screws.
3. All threaded openings are extruded to provide extra thread engagement.
4. Stable platform, even on corners!
5. Long life snap switch.
6. #8 grounding screw is provided.
7. High quality, black E-Coat.
8. A fiberglass sleeve is supplied to comply with UL requirement for strain-relief of thermoplastic jacketed cord.
9. Wide target area!
10. 2-stage options available.

Momentary Action

Custom Foot Switches:

The Series 600 can be provided with special nameplates, cord sets, plugs, strain reliefs, and other features that may be required for specific applications. Available in DPDT; 2-stage operation, higher amperage and voltage ratings on special orders.

BENEFITS

Another foot switch designed with the operator in mind. Unlike traditional foot switches, the Series 600 has a wider platform with support along the front operating edge and around the corners.

The Series 600 features a very significant and unique design.




YOUR FOOT, OUR SWITCH

135 Park Road • Putnam, CT 06260
860-928-0567 • ConnTrol.com

- Made in the USA
- No Minimum Order
- Superior Durability and Lifespan
- Exceptional Lead Times and Delivery

WARNING: It is the responsibility of the user to determine the suitability of a foot switch for the intended use and to determine that it will comply with all Federal, State, and Local safety and health regulations.