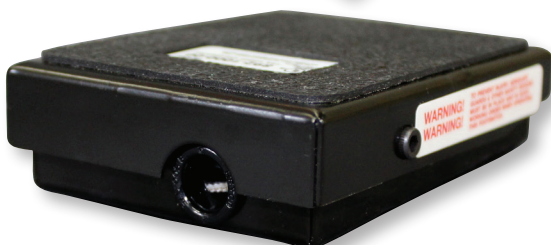


Series 892

Momentary Action
Traditional

Designed for greater operator comfort and improved productivity.



Momentary Action

Custom Foot Switches:

The Series 892 can be provided with special nameplates, cord sets, plugs, strain reliefs, and other features that may be required for specific applications.

FEATURES

1. Solid steel construction, with a full cover and base pads.
2. The 892 features a cable clamp that is located inside the foot switch.
3. Redundant corrosion-resistant spring system.
4. High strength socket head hinge screws.
5. All threaded openings are extruded to provide extra thread engagement.
6. Two mounting holes.
7. Capable of handling up to 14/3 cord.
8. .187" x .020" quick-connect terminals required.
9. Long life snap switch.
10. #8 grounding screw is provided.
11. High quality, black epoxy coating.
12. A fiberglass sleeve is supplied to comply with UL requirement for strain-relief of thermoplastic jacketed cord.
13. Series 892 is UL listed to U.S. and Canadian safety standards.



BENEFITS

For operations which require separate control initiation, dual and triple foot switches are available. These switches can be mounted on a heavy gauge steel base plate or a guard, both of which are separated by a barrier to oppose simultaneous operation.



YOUR FOOT, OUR SWITCH

135 Park Road • Putnam, CT 06260
860-928-0567 • ConnTrol.com

- Made in the USA
- No Minimum Order
- Superior Durability and Lifespan
- Exceptional Lead Times and Delivery

WARNING: It is the responsibility of the user to determine the suitability of a foot switch for the intended use and to determine that it will comply with all Federal, State, and Local safety and health regulations.